

Rockwell custom kit No. CK-AG-2

International

P.O. BOX 3090 ALBANY, GEORGIA 31706-3090 PHONE 229/883-1440 FAX 229/439-9790

Custom Kit CK-AG-2
9 April, 1975

WINDSHIELD WASHER AND WIPER INSTALLATION

EFFECTIVITY: S-2R, S/N 1416R and subs

APPROVAL: FAA DER Approved

ELECTRICAL LOAD: Not Applicable.

WEIGHT AND BALANCE: The weight and balance change resulting from installation of this Custom Kit is as follow:

Weight (LBS)	H-ARM (Inches)	H-Moment (In-Lbs)
+9.6	82.0	788

SUPPLY DATA: Parts required to comply with this publication are furnished in Kit form. Reference this Custom Kit, aircraft model and factory serial number when ordering Custom Kit No. CK-AG-2 consisting of the following:

<u>Qty</u>	<u>Part No.</u>	<u>Description</u>
1 ea	10958-1	Cover
1 ea	11173-3	Ensolite
1 ea	11174-3	Angle
1 ea	11175-3	Line Block
1 ea	11175-5	Wire Assy
1 ea	11175-7	Wire Assy
1 ea	11175-9	Wire Assy
1 ea	11175-11	Wire Assy
1 ea	11175-13	Decal
1 ea	11175-17	Plate
1 ft	91323	Hose (3/32 I.D.)
12 ft	91431	Hose (5/32 I.D.)
2 ea	AN365-832C	Nut
2 ea	AN526-8-12R	Screw
3 ea	AN526-832-7R	Screw
2 ea	AN526-832R14	Screw
2 ea	AN960-4	Washer
2 ea	AN960C6L	Washer

2 ea	AN960-8	Washer
5 ea	AN960-8L	Washer
9 ea	AN960-10	Washer
2 ea	AN960-416	Washer
8 ea	AN960-416L	Washer
2 ea	AN960-1216	Washer
2 ea	AN960-1216L	Washer
5 ea	DK375F	Clamp
1 ea	EC750	Sealant (5 oz. Tube)
1 ea	FI721002A	Nozzle Assy
1 ea	HF12	Wiper Blade
1 ea	LE721183	Arm Assy
9 ea	MS21043-3	Nut
4 ea	MS21043-4	Nut
5 ea	MS21043-08	Nut
2 ea	MS21044-04	Nut
2 ea	MS21044-06	Nut
9 ea	MS21919DG6	Clamp
2 ea	MS24694-S97	Screw
4 ea	MS27039-4-09	Screw
1 ea	MS27212-1-4	T-Board
2 ea	MS35206-215	Screw
9 ea	MS35207-242	Screw
2 ea	MS35338-136	Lockwasher
2 ea	MS35489-3	Grommet
1 ea	PSM-5N	Circuit Breaker
1 ea	SH721215A	Shaft and Pivot Assy
1 ea	SW721025A	Switch
1 ea	WWC24L2624	Motor and Bracket Assy
4 ft.	294095	White Trim
1 ea	25 Watt, 7-Ohm	Resistor
1 ea	86350	Arm
1 ea	KT721050	Windshield Washer Kit
	Consisting of:	
	1 CN721004A	Container and Pump Assy
	1 FI721001	Tee
1 ea	No. CK-AG-2	Custom Kit
2 ea	AN363-428	Nut

NOTE

If any problems are encountered while installing this custom kit, contact General Aviation Division, Rockwell International, Customer Service Department, Bethany, Oklahoma 73008.

INSTRUCTIONS:

- A. Remove right fuselage side skins immediately below right cockpit door.

- B. Locate, drill and install CN721004A container and pump assembly on lower right aft cockpit enclosure bulkhead (see Figure 1. Sheet 2 of 2).
- C. Remove existing crash pad to facilitate installation of nozzle assembly.
- D. Locate and drill a 0.625/0.630 inch diameter hole in forward fuselage for installation of nozzle assembly (see Figure 1. Sheet 1 of 2).
- E. Install FI721002A nozzle assembly on 11175-17 plate (see Figure 1., Sheet 1 of 2).
- F. Using items assembled in step E as a template, locate and drill two (2) 0.168/0.174 inch diameter holes for installation of 11175-17 plate (see Figure 1., Sheet 1 of 2).
- G. Install FI721002A nozzle assembly and 11175-17 plate on aircraft (see Figure 1., Sheet 1 of 2)
- H. Seal one (1) end of FI721001 tee with EC750 sealant (see Figure 1., Sheet 1 of 2).
- I. Install 91431 hose, 91323 hose, FI721001 tee, MS35489-23 grommet (2 places), MS21919DG6 clamp (9 places) and DK375F clamp (5 places) (see Figure 1, Sheet 1 of 2).
- J. Locate, drill and install MS27212-1-4 terminal board and 11175-3 line block on inner cockpit skin (see Figure 1, Sheet 2 of 2).
- K. Locate, drill and install PSM-5N circuit breaker and SW721025A switch on left instrument panel (see Figure 1, Sheet 1 of 2).
- L. Install 25 watt, 7-ohm resistor, 11175-5, -7, -9, and -11 wire assemblies (see Figure 1 and 3).
- M. Install 11175-13 decal on left instrument panel (see Figure 1, Sheet 1 of 2).
- N. Remove aircraft headliner.
- O. Remove and discard existing screws, washers and nuts (3 places) from upper windshield frame and install AN526-832-7R screw, AN960-8L washer and MS21043-08 nut (3 places) (see Figure 2).
- P. Remove windshield wiper motor from mounting bracket.
- Q. Assemble 11174-3 angle on windshield wiper motor mounting bracket (see Figure 2).
- R. Temporarily install 11174-3 angle and windshield wiper motor mounting bracket on aircraft and locate and drill a 0.687 inch diameter hole in aircraft canopy for windshield wiper shaft assembly using windshield wiper motor mounting bracket as a template (see Figure 2).
- S. Remove 11174-3 angle and motor mounting bracket from aircraft.
- T. Install windshield wiper motor, LE721183 arm assembly and SH721215A shaft and pivot assembly on motor mounting bracket.

- U. Install items assembled in step T in aircraft.
- V. Route windshield wiper motor lead wires down through left windshield frame shield to left instrument panel.
- W. Make cutout in aircraft headliner to fit around windshield motor and clear 10958-1 cover (see Figure 2).
- X. Install 294095 white trim, 11173-3 ensolite, 10958-1 cover and existing headliner in aircraft (see Figure 2).
- Y. Install LE721142 arm and HF-12 wiper blade (see Figure 2).
- Z. Connect windshield wiper and washer system to aircraft electrical system (see Figure 3).
- AA. Reinstall existing crash pad and right fuselage side skins.
- BB. Functional test windshield washer and wiper system to assure proper operations.

AIRCRAFT RECORDS: Make appropriate entry in aircraft maintenance records as follows:
Custom Kit No. CK-AG-2 dated April 9, 1975, entitled "Windshield Washer and Wiper Installation", accomplished (date)_____.

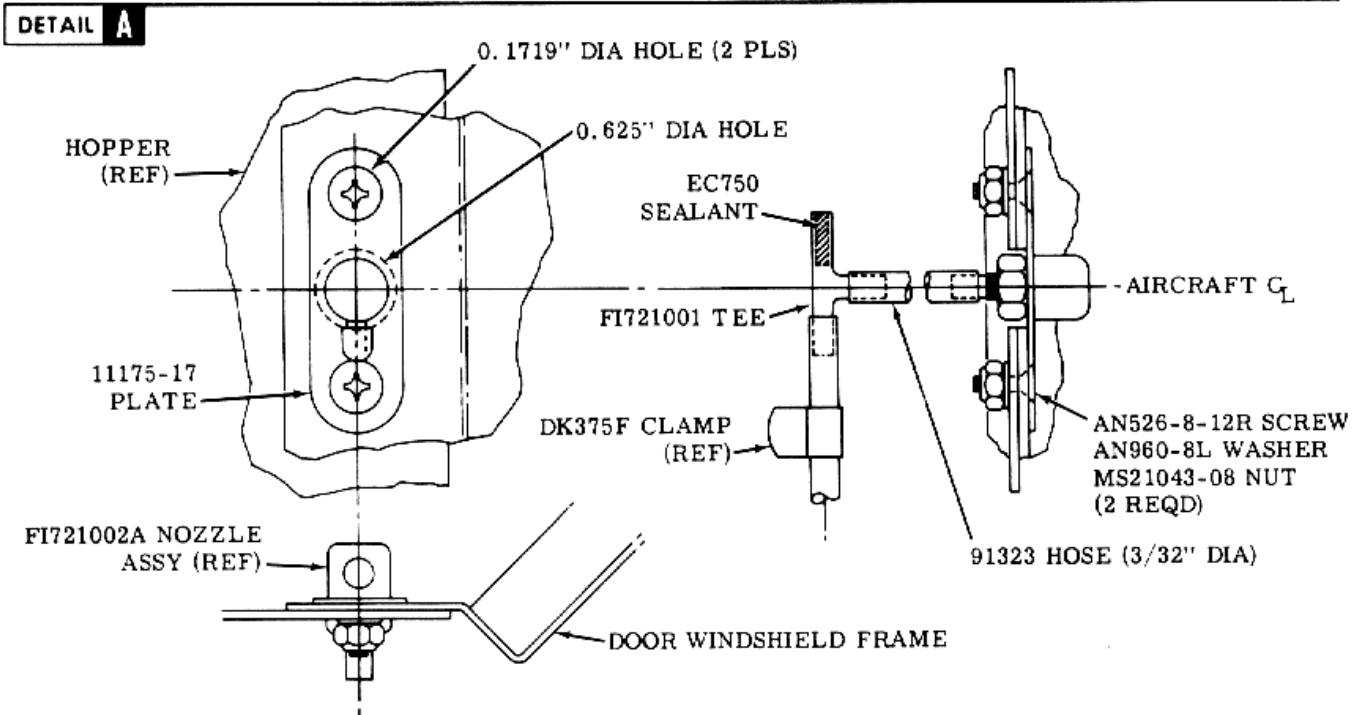
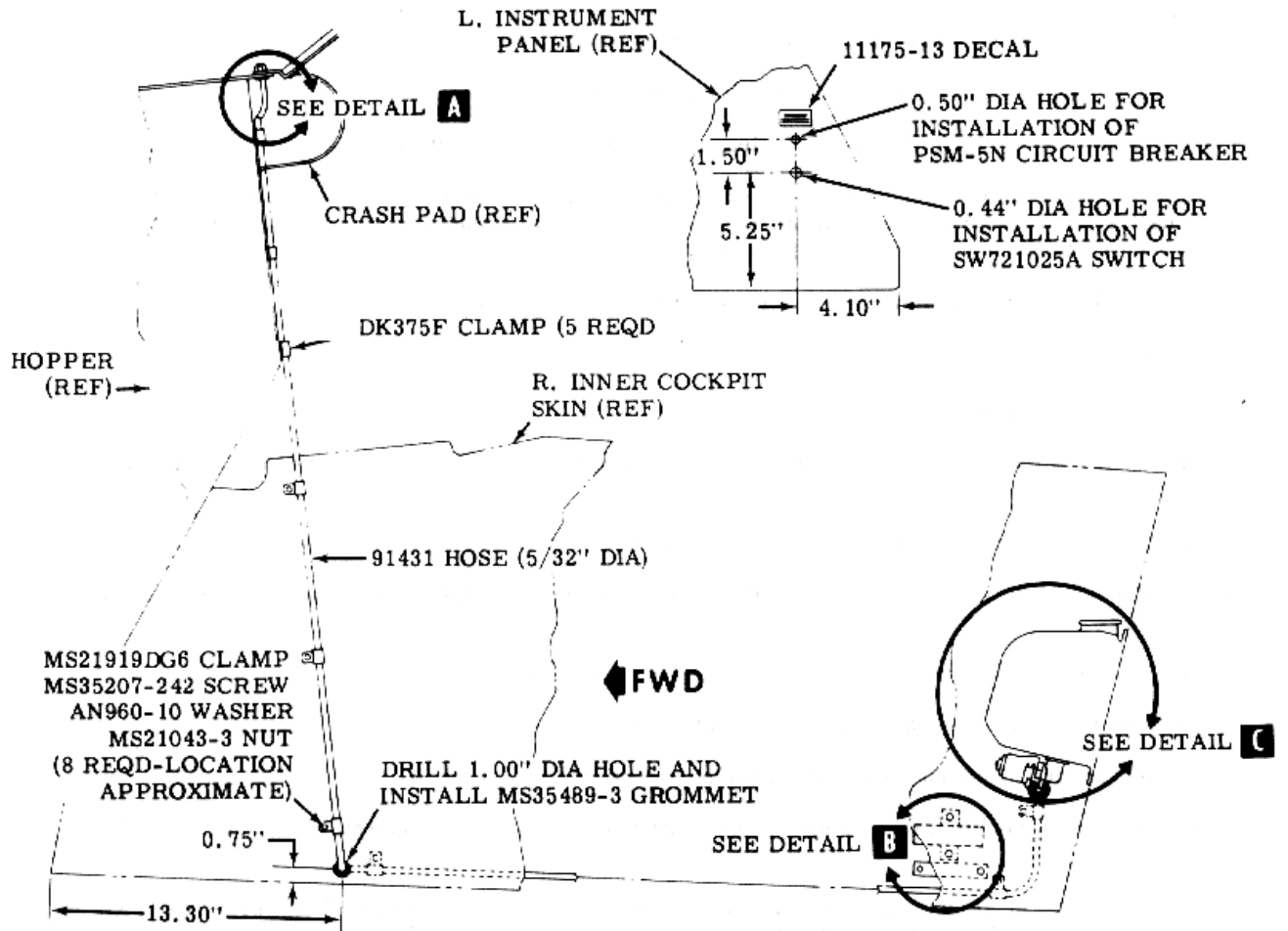
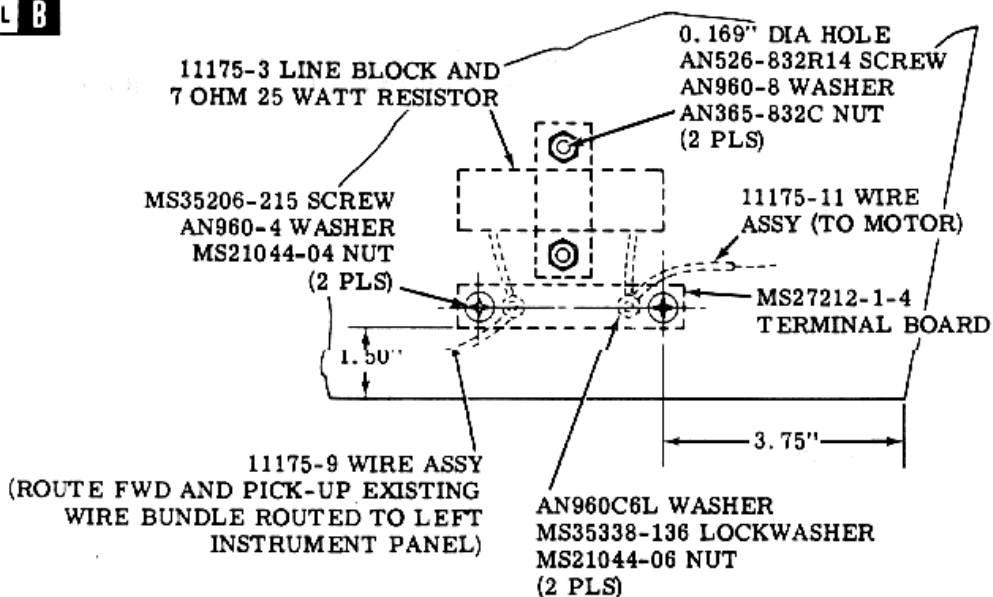


Figure 1. (Sheet 1 of 2)

DETAIL B



DETAIL C

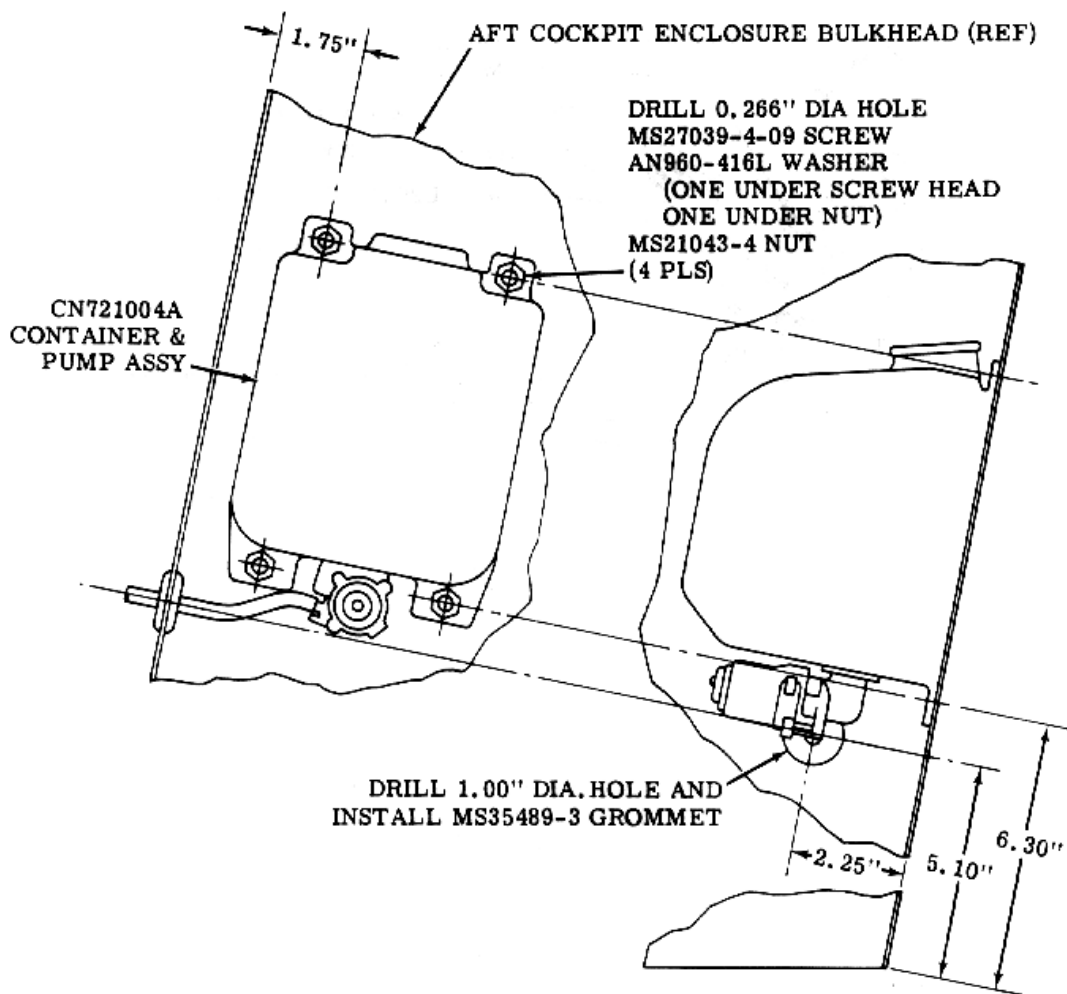


Figure 1. (Sheet 2 of 2)

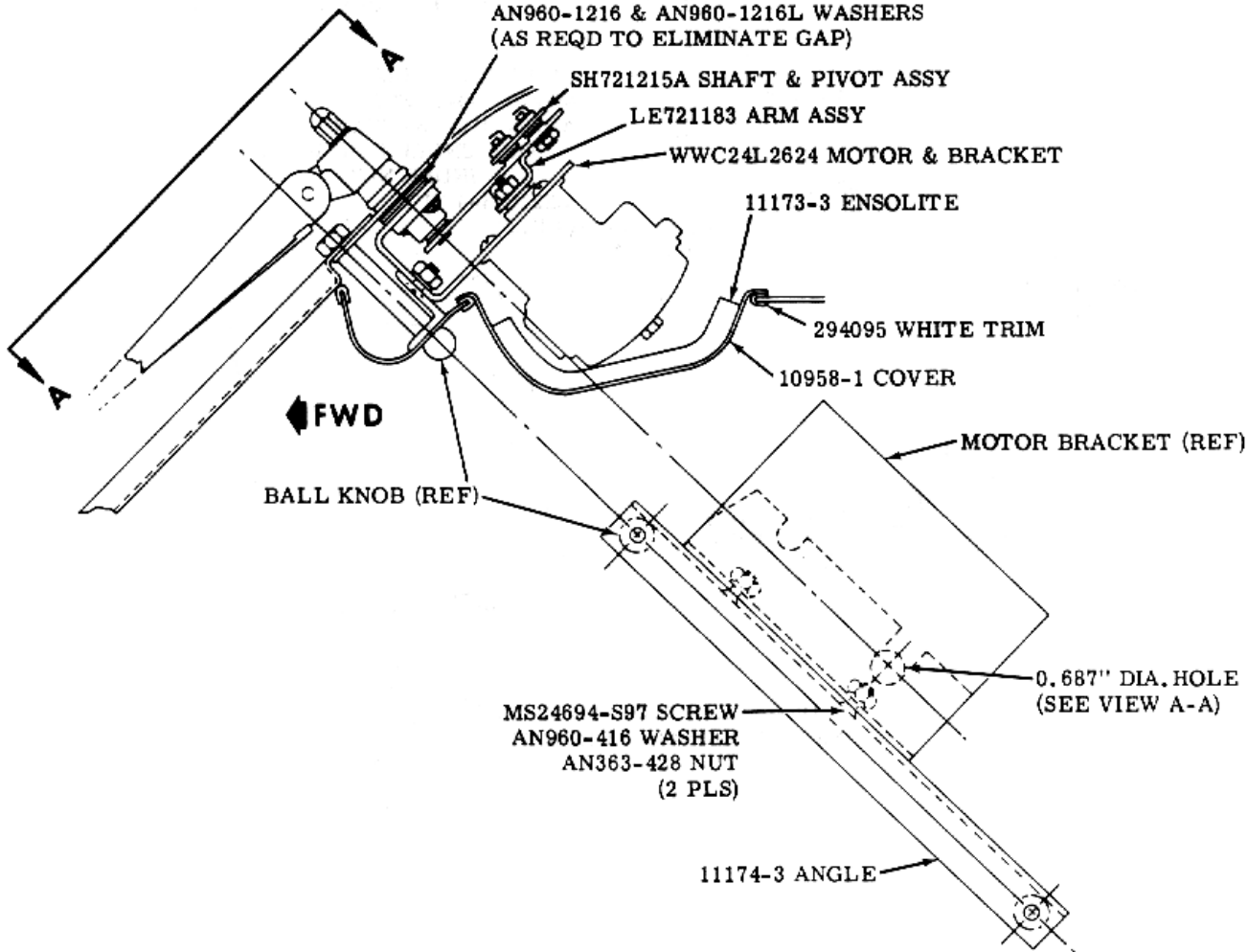
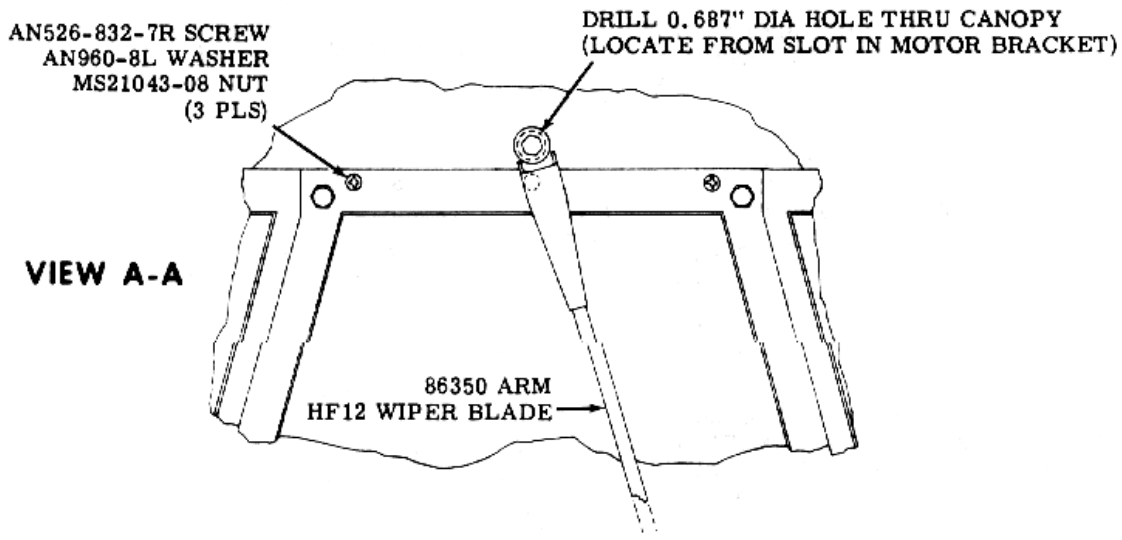


Figure 2.

